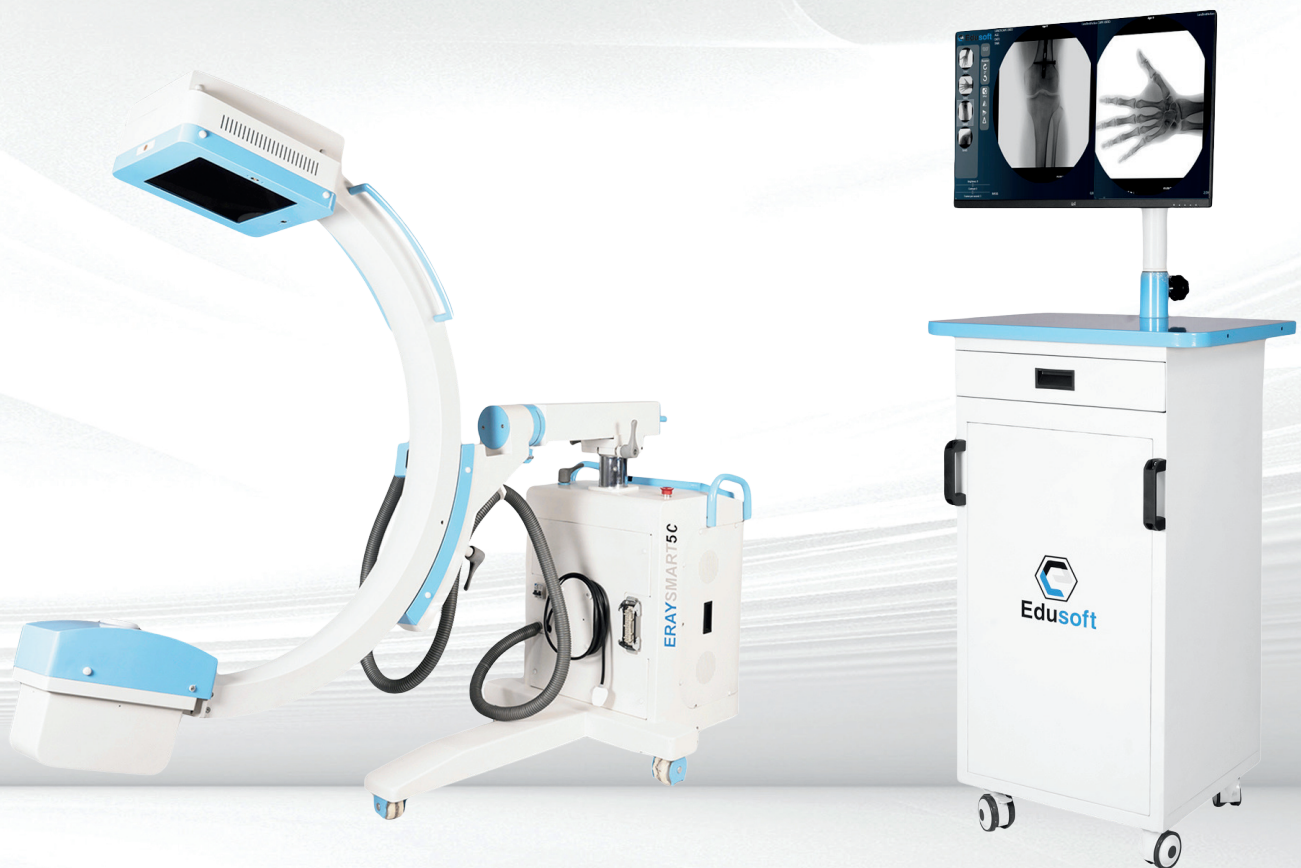


# DIGITAL C-ARM WIDE & FAST

Mobile C-Arm X-Ray System-5kW



SMART IMAGING,  
SMARTER SURGERY





# DIGITAL C-ARM WIDE & FAST: ERAY SMART 5C

Experience exceptional image clarity and detail with the **ERAY SMART 5C**, delivering enhanced imaging at a minimal dose for effortless and effective diagnostics. Equipped with a high-performance 17x17 inch wide flat panel detector, it effortlessly captures both static and dynamic images with remarkable precision.



## LIVE IMAGE VIEWING & COMMUNICATION

- 10" touch console
- Real-time image support
- Easy workflow and operations

## TOUCH WORKSTATION

- Medical 27" touch monitor
- Support of dual viewing for live & diagnosis
- Rolls easily to desired location
- Adjustable height and display tilt
- Capturing images upto 30fps



## MORE APPLICATIONS IN OR



## Clinical focus



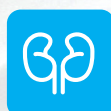
Orthopedics



General surgery



Pain  
management



Urinary surgery



Spine surgery



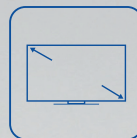
Gastroenterology



## MORE OPPORTUNITIES FOR YOUR CLINIC



**High power output**  
5 kw



**Touch Monitor**  
Main: 27" or 2X19" (optional)  
Sub: 10" console



**Detector 9" X 9"**  
High resolution FPD



**DICOM Services**  
DICOM 3.0  
Connectivity to PACS



**01** Rotated motion



**02** Vertical travel



**03** Orbital rotation




**04** Horizontal travel





## TECHNICAL SPECIFICATIONS


X-RAY GENERATOR	MODEL	ERAY SMART 5C
	GENERATOR TYPE	High Frequency Technology
	POWER OUTPUT	5kW
	mAs RANGE	0.2mAs~125mAs
CONTINUOUS FLUROSCOPY MODE	VOLTAGE RANGE	40kV~110kV
	mA RANGE	0.2mA~10mA
PULSE FLUROSCOPY MODE	VOLTAGE RANGE	40kV~110kV
	mA RANGE	0.2mA~25mA
DIGITAL RADIOGRAPHY MODE	VOLTAGE RANGE	40kV~125kV
	mA RANGE	1mA~25mA
X-RAY TUBE	TYPE	Stationary Anode
	FOCAL POINT	0.6/1.8 mm
COLLIMATOR	TYPE	Rectngular Collimator
C-ARM STRUCTURE	ORBITAL ROTATION	-33° to +117°
	LATERAL ROTATION	± 180°
	VERTICAL TRAVEL	400mm
	HORIZONTAL TRAVEL	200mm
	WIG/WAG RANGE	± 15°
FLAT PANEL DETECTOR	TECHNOLOGY	Amorphous Silicon (a-Si) with CsI
	SIZE	9"X9"
	EFFECTIVE IMAGING AREA	236.5mm X 236.5mm
	MATRIX SIZE	1024 X 1024 px
	A/D CONVERSION	16 bit
	PIXEL SIZE	154µm
	SPATIAL RESOLUTION	2 lp/mm
MONITOR	SIZE	27"Monitor or 19"Monitor (Optional)
	RESOLUTION	1280X1024
	SUPPORT	Multi-Touch
	HORIZONTAL ROTATION ANGLE	360°

### Edusoft Healthcare Pvt. Ltd.

 B-83, Phase-II, Mangolpuri Industrial Area, New Delhi-110034, India

 ceo@edusofthealth.com

 1800-120-280-280

 +91 8851248073, +91 8826066621

• Noida • Lucknow • Chandigarh • Pune • Bhopal • Chennai • Bengaluru • Kolkata  
• Hyderabad • Jaipur • Guwahati • Ahmedabad • Mumbai

Copyright © 2025 Edusoft Healthcare Pvt. Ltd. All rights reserved. Specifications and designs are subject to change without notice. Non-metric weights and measurements are approximate. All data were deemed correct at time of creation. Edusoft is not liable for errors or omissions. All brand, product, service names and logos are trademarks and/or registered trademarks of their respective owners and are hereby recognized and acknowledged.



Scan Code or visit  
[www.edusofthealth.com](http://www.edusofthealth.com)  
to learn more